

KECKLEY

No Question. We Have the Answers.



KECKLEY COMPANY
3400 Cleveland Street P.O. Box 67
Skokie, IL 60076
800-KECKLEY (800.532.5539)
847.674.8422
FAX 847.674.2106
email: sales@keckley.com
website: www.keckley.com

Established 1914

Ball Valves



Unibody Threaded
 *Style BV10
 2000 W.O.G.
 R-PTFE Seats
 Sizes 1/4" - 2"
 Double Reduced Port



Unibody Threaded
 *Style BV12
 2000 W.O.G.
 R-PTFE Seats
 Sizes 1/4" - 2"
 Double Reduced Port



Seal Welded
 *Style BVS2
 2160 W.O.G.
 R-PTFE Seats
 Sizes 1/4" - 4"
 Full Port



Seal Welded
 *Style BVSC
 Class 900 (2160 PSIG)
 R-PTFE Seats
 Sizes 1/4" - 2"
 Full Port



Seal Welded
 *Style BVS3
 Class 1500 (3600 PSIG)
 Delrin AF Seats
 Sizes 1/4" - 2"
 Full & Reduced Port



Seal Welded
 *Style BVS6
 Class 2500 (6000 PSIG)
 PEEK Seats
 Sizes 1/4" - 2"
 Full & Reduced Port

*Body/Trim Material: CS w/ 316SS Trim or CF8M w/ 316SS Trim.

†Available End Connections: NPT Ends, Socket Weld Ends, Socket Weld x FNPT Ends, or MNPT x FNPT Ends.



Seal Welded
 *Style BVS10
 Class 4500 (10800 PSIG)
 PEEK Seats
 Sizes 1/4" - 1/2"
 Full Port



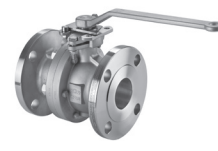
Gauge Valve
 *Style BVG3
 Class 1500 (3600 PSIG)
 PEEK Seats
 Sizes 1/2" - 2"
 Full Port



Gauge Valve
 *Style BVG10
 Class 4500 (10800 PSIG)
 PEEK Seats
 Sizes 1/2"
 Reduced Port



Unibody RF Flanged
 *Style BVF1
 Class 150 & 300
 R-PTFE Seats
 Sizes 1/2" - 6"
 Reduced Port



Split-Body RF Flanged
 *Style BVF2
 Class 150 & 300
 R-PTFE Seats
 Sizes 1/2" - 8"
 Full Port



Split-Body RF Flanged
 *Style BVF2
 Class 600
 R-PTFE Seats
 Sizes 1 1/2" - 6"
 Full Port

*Body/Trim Material: CS w/ 316SS Trim or CF8M w/ 316SS Trim.

†Available End Connections: NPT Ends, Socket Weld Ends, Socket Weld x FNPT Ends, or MNPT x FNPT Ends.



3-Way RF Flanged
 *Style BVF3
 Class 150 & 300
 PTFE Seats
 Sizes 1 1/2" - 4"
 Full Port



2-Piece Design
 *Style BVM2
 3000 W.O.G.
 R-PTFE Seats
 Sizes 1/4" - 1"
 Full & Reduced Port



Seal Welded
 *Style BVSO
 3000 W.O.G.
 Delrin AF Seats
 Sizes 1 1/2" - 2"
 Full Port



3-Piece Maintenance Design
 *Style BVM3
 Class 800
 1920 W.O.G.
 R-PTFE Seats
 Sizes 1/4" - 2 1/2"
 Full & Reduced Port



Actuated Ball Valves
 Threaded or Flanged
 All Pressure Classes
 Spring Return or Double Acting
 Sizes 1/4" - 8"



*Body/Trim Material: CS w/ 316SS Trim or CF8M w/ 316SS Trim.

†Available End Connections: NPT Ends, Socket Weld Ends, Socket Weld x FNPT Ends, or MNPT x FNPT Ends.

Y-Strainers



Cast Iron
 Style B / Style B7
 Class 250 NPT
 Sizes 1/4" - 4"
 (Style B7 Sizes 1/4" - 3")



Cast Iron
 Style A7
 Class 125 & 250 FF
 Sizes 2" - 24"



Ductile Iron
 Style BD1
 Class 300 NPT
 Sizes 1/2" - 2"



Bronze
 Style F150 / Style E150
 Class 125 NPT or Solder Joint
 Sizes 1/4" - 3"



Bronze (Lead Free)
 Style F7 / E7
 Class 125 NPT or Solder Joint
 Sizes 1/4" - 3"



Bronze
 Style F300
 Class 250 NPT
 Sizes 1/4" - 3"



Bronze
 Style E300
 Class 250 Solder Joint
 Sizes 1/4" - 3"



Carbon Steel
 Style BA7
 Class 150 FF
 Sizes 1/2" - 12"



Carbon Steel
 Style SB7 / SB7BC
 Class 600 NPT or SW
 Sizes 1/4" - 3"



Carbon Steel
 Style SBF
 Class 1500 NPT or SW
 Sizes 1/2" - 3"



Carbon Steel
 Style SA7
 Class 150 & 300 RF
 Sizes 1/2" - 24"



Carbon Steel
 Style SA7
 Class 150 & 300 BW
 Sizes 1/2" - 24"

Y-Strainers (cont.)



Carbon Steel
Style SA
Class 600 RF or BW
Sizes ½" - 12"



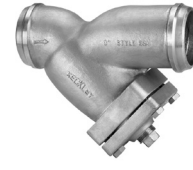
316 Stainless Steel
Style SSB7 / SSB7BC
Class 600 NPT or SW
Sizes ½" - 3"



316 Stainless Steel
Style SSBF
Class 1500 NPT or SW
Sizes ½" - 3"



316 Stainless Steel
Style SSA7
Class 150 & 300 RF
Sizes ½" - 24"



316 Stainless Steel
Style SSA7
Class 150 & 300 BW
Sizes ½" - 24"



316 Stainless Steel
Style SSA
Class 600 RF & BW
Sizes ½" - 12"

Basket Strainers



Cast Iron
Style KT7
Class 125 NPT
Sizes ¼" - 3"



Cast Iron
Style D
Class 125 & 250 FF
Sizes 2" - 12"



Cast Iron
Style GFV
Class 125 & 250 FF
Sizes 2" - 16"



Cast Iron
Style GFVK
Class 125 FF
Sizes 2" - 12"



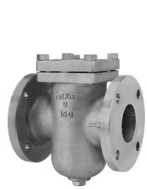
Cast Iron
Style GFVK7
Class 125 FF
Sizes 2" - 12"



Ductile Iron
Style KF7
Class 125 FF
Sizes 1½" - 12"



Bronze
Style BKF7
Class 150 FF
Sizes 1½" - 12"



Bronze
Style BGFV
Class 150 FF
Sizes 2" - 12"



Carbon Steel
Style SD / SDK*
Class 150 & 300 NPT
Sizes ¼" - 3"



Carbon Steel
Style SD
Class 150 & 300 RF
Sizes 2" - 12"



Carbon Steel
Style SGFV / SGFVK*
Class 150, 300, 600 RF
Sizes 1½" - 14"



316 Stainless Steel
Style SSD / SSDK*
Class 150 & 300 NPT
Sizes ¼" - 3"



316 Stainless Steel
Style SSGFV / SSGFVK*
Class 150, 300, 600 RF
Sizes 1½" - 14"

*Units with knob type covers are available in Class 150 only.

Duplex Strainers



Cast Iron
Bronze
Carbon Steel
316 Stainless Steel
NPT
Sizes ¾" - 2½"



Cast Iron
Bronze
Carbon Steel
316 Stainless Steel
Flanged
Sizes 1" - 8"



Cast Iron
Bronze
Carbon Steel
316 Stainless Steel
Flanged
Sizes 10" - 20"



Fabricated
Copper Nickel
Carbon Steel
Stainless Steel
Class 150 - 600 Flanged
Sizes 6" - 24"

Duplex Options:



Differential Pressure
Indicators



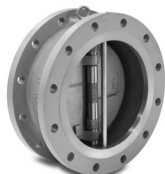
DIN Electrical Probes

Check Valves

*All Cast Carbon Steel and Cast 316 Stainless Steel Body Double Disc Check Valves are Retainerless Design.



Double Disc
Cast Iron
***Carbon Steel**
***316 Stainless Steel**
Style DD
Class 125 - 1500
Sizes 2" - 48"



Double Flange Body
***Carbon Steel**
***316 Stainless Steel**
Style DF (Flange)
Class 150 - 1500
Sizes 8" - 48"



Lug Body
***Carbon Steel**
***Stainless Steel**
Style DL (Lug Style)
Class 150 - 1500 RF
Sizes 2" - 48"



Wafer Center Guided
Cast Iron
Carbon Steel
316 Stainless Steel
Style CW
Class 125 - 300
Sizes 2" - 12"



Globe Center Guided
Cast Iron
Carbon Steel
316 Stainless Steel
Style CG
Class 125 - 300
Sizes 2" - 24"

Fabricated Strainers



Fabricated - "Y"
Carbon Steel - FSA
Stainless Steel - FSSA
Class 150 - 600
Flanged or BW
Sizes 2" - 30"



Fabricated - Basket
Carbon Steel - FB
Stainless Steel - FFB
Class 150 - 1500
Flanged or BW
Sizes 2" - 30"

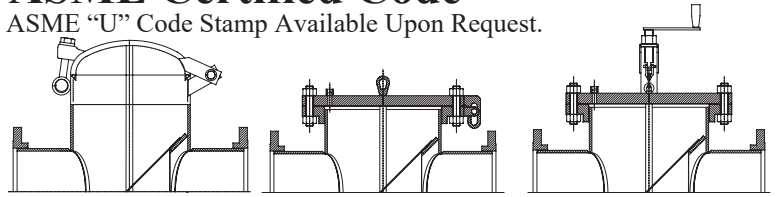


Fabricated - Tee
Carbon Steel - T
Stainless Steel - TT
Class 150 - 1500
Flanged or BW
Sizes 2" - 30"

90/10 Copper Nickel, Alloy 20, Monel, and other materials, pressure classes or designs available upon request.

ASME Certified Code

ASME "U" Code Stamp Available Upon Request.



Quick Open Cover
Style FB-Q

Bolted Slide Hinge Cover
Style FB-H

Integral Davit Swing Arm
Style FB-D

Special Options on Fabricated Strainers

- Differential Pressure Gauges
- Custom Blowdown Connections
- Custom Nozzle Positions
- Custom Basket Configurations
- Custom Venting & Special Drains
- Custom Floor Stands
- Special Coating & Galvanizing
- Custom Mounting Hardware
- Oversized Bodies

Temporary Strainers



Fabricated - Cone
Carbon Steel
Stainless Steel
Style TC
Class 150 - 2500 Flanged
Sizes 1½" - 24"



Fabricated - Basket
Carbon Steel
Stainless Steel
Style TB
Class 150 - 2500 Flanged
Sizes 1½" - 24"



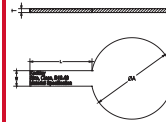
Fabricated - Plate
Carbon Steel
Stainless Steel
Style TP
Class 150 - 2500 Flanged
Sizes 1½" - 24"

Line Blind

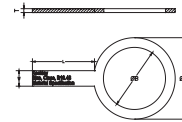


Fabricated
Carbon Steel - FLB
Stainless Steel - FLB
Class 150 - 1500
Flanged or BW
Sizes 1" - 24"

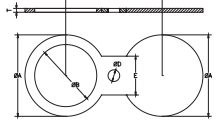
Blinds, Spacers, Spectacles



Paddle Blind
Carbon Steel
Stainless Steel
Class 150 - 1500 Flanged
Sizes ½" - 24"



Paddle Spacers
Carbon Steel
Stainless Steel
Class 150 - 1500 Flanged
Sizes ½" - 24"



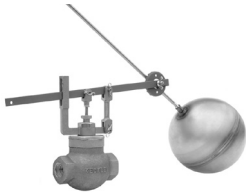
Spectacle Blinds
Carbon Steel
Stainless Steel
Class 150 - 1500 Flanged
Sizes ½" - 24"

Float & Lever Valves

All Available - Angle or Globe Pattern - NPT or Flanged.



Bronze, Cast Iron, & 316 SS body & trim.
Double Seated (Non Tight Closing)
Type 27
Sizes ½" - 12"



Bronze, Cast Iron, & 316 SS body & trim.
Single Seated (Tight Closing)
Type 7
Sizes ½" - 2"



Bronze or Cast Iron body
Bronze trim.
Single Seated (Tight Closing)
Type 77
Sizes 2" - 10"



Bronze, Cast Iron, & 316 SS body & trim.
Double Seated (Non Tight Closing)
Type 62
Sizes ½" - 2"

Pump Accessories



Cast Iron
Style PSD (Suction Diffuser)
Class 125 FF
Sizes 2" x 1½" - 20" x 20"



Fabricated
Style FPSD (Suction Diffuser)
Class 150 - 600 Flanged
Sizes 2½" x 2½" - 30" x 30"



Cast Iron
Style TDV (Triple Duty Valve)
Class 125 FF
Sizes 2" - 20"

Control Valves (for complete offerings visit Keckley.com)



Bronze -Type AA
SS Trim - Steam Service
Nylon Trim - Air Service
For reduced pressure
above 40 PSI.
NPT or FF
Sizes ½" - 6"



Bronze -Type AR
SS Trim - Steam Service
Nylon Trim - Air Service
For reduced pressure
below 40 PSI.
NPT or FF
Sizes ½" - 6"



Bronze & Cast Iron
Bronze or SS Trim
Direct or Reverse Acting
Type 114, 114R, 119, 119R
NPT or FF
Sizes ½" - 12"

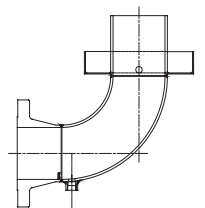


Bronze or Cast Iron
Bronze or SS Trim
Globe or Angle Pattern
Steam, Air, Gas, or Liquid
Type 135
NPT or FF
Sizes ¾" - 8"

Drip Pan Elbows



Cast Iron
Drip Pan Elbow
Style DPE
NPT or FF
Sizes ¾" - 10"
*6" & 8" Elbows have
Class 125 FF



Fabricated
Drip Pan Elbow
Style FDPE
NPT or Flanged
Sizes ¾" - 20"